

CHRIST PRESBYTERIAN CHURCH

August, 2011 Newsletter



Christ Presbyterian Church

P. O. Box 716

Sweetwater, TN 37874

www.cpcsweetwater.org



ESL @ CPC

By Marty McCampbell

Have you been looking for a way to impact our community for Christ? Jesus made a difference everywhere He went. This is our chance to do that here. In a parable that Jesus told, the King (Jesus) told his servants (us) to go out into the highways and by-ways and bring in people for the banquet. We as a church have an opportunity to play a part (big or small) in a new ministry that will both meet a need and share the gospel, bringing people to the banquet table!

We are planning to launch an ESL (English as a Second Language) program here at CPC beginning the middle of September. What a way to make new friends and help them along the way! We believe that God will bring many whom He has called and give us the privilege of being a part of their journey toward salvation.

There are many jobs that need to be filled to accomplish this task. We need teachers, assistant teachers, snack providers, attendance takers and many friendly faces. The teachers will be well trained so they won't feel lost. The folks in an ESL program need to hear and converse in English only. And the major part of the program is fellowship: mixing and mingling. Later on we want to offer other friendship opportunities such as parties, invitations to our homes, etc. We want to teach ESL and share the gospel through friendship.

Even though the program is for adults, we may need some people to play with children once in a while. We also need English to Spanish and Spanish to English dictionaries and Bibles. Also, the Oxford Picture Dictionary has been recommended. Children's picture flashcards, first grade reading books, charts, games (Pictionary, etc.) and other reading helps are needed. Financial help for workbooks and other teaching materials will be needed too.

Please be in prayer for this opportunity to love our neighbors. And prayerfully consider how you can take part in this new ministry of our church. Thank you!

Budget Report

General Fund — Thru July 31, 2011

Income	\$	70,421.91
Needed	\$	70,330.38
Difference*	\$	(-2,252.82)

Faith Promise — Thru July 31, 2011

Faith Promise Income	\$	5,535.00
Needed	\$	7,129.52
Difference*	\$	(-1,594.52)

* () indicate deficit

Our total annual commitment to missionaries:	\$	11,959.20
Faith Promise Checking Account Balance as of July 31, 2011	\$	9,806.60



In everything I did, I showed you that by this kind of hard work, we must help the weak, remembering the words the Lord Jesus himself said: “It is more blessed to give than to receive.”

.....Acts 20: 35

Nursery



7-Woodruff
14-Scott
21-Chastain
28-Maxie

Nursery workers are needed.
Please let Frankie know if you can help.

Remember!!

We will not have Wednesday evening services during the month of August.



Christ Presbyterian Church

Summer 2011

Men's Fellowship & Cookout

Saturday, August 6th, 6:00 PM

@ the Harsh Farm (347 Christianburg Rd.)

SWIMMING! GOOD FRIENDS! GOOD FOOD!

BRING A FRIEND (or an enemy!)

Guest Speaker: Chris Talley

Of Redeemer Church of Knoxville

Topic: Manhood & Friendship,

Friend or Foe?



Please sign the sign-up sheet so we'll have an idea of how many will be attending.

Prayer Concerns



*I wait for the Lord, my soul waits, and in His Word
I do hope..*

Psalm 130:5

Shut Ins & Their Caregivers: Emmett Skaggs; Dorothy Skaggs; Nancy Barton and her husband, Tom; Betty Turpin's mother, Leon Holder (assisted living); Wes' mother, Nancy Alford.

Health Concerns: Bill & Sarah Stemen; Jewell & Suzy Wicker; Griff Harsh; Nomon & Nancy Kennedy; Reba & John Wolfe; Kathleen Schultz ; Randy Scott; Jesse Shinn; Bobbie & Fred Nicholson's son-in-law, Mark, Parkinson's disease and unspoken concerns for their son Ricky; Kathleen Schultz's sister, Betty Fisher, diagnosed with throat cancer.

CPC: Our pastor, our people, & our church leaders.



**Communion
August 28th**

Children In Church



A little boy was attending his first wedding. After the service, his cousin asked him, "How many women can a man marry?" The little boy responded, "Sixteen!" His cousin was amazed that he had answered so quickly, and asked "How do you know that?" The little boy said "Easy." "All you have to do is add it up, like the pastor said, 4 better, 4 worse, 4 richer, 4 poorer."



Women's Bible Study on the book of Hebrews!!!

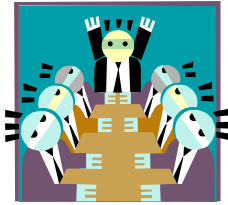
Meets on Mondays at 7:00 PM

At the home of Marty McCampbell



School Supplies

Again the year, we will be collecting school supplies for Brown Intermediate School, just across from CPC. Students always need pencils, folders, notebook paper, glue, etc. There is a list of supplies on the bulletin board that we can help them with, and also copies of this list on the table in the foyer.



Session Meeting

August 22nd

6:30 PM

@ CPC

August Anniversaries

4-Tom & Nancy Barton

15-Wayne & Denise Sorensen



August Birthdays

2- Issac Maxie

2-Kathryn Woodruff

6-Dorothy Skaggs

13-Betty Lou Turpin



2011 Women in the Church International Conference

October 7 — 9, 2011

Atlanta, Georgia

The theme for conference is a grand glorious look at the full orbed grace of God in our lives — **Amazing Grace 360!** Be sure to stay connected to the conference by using the CEP website — www.AmazingGrace360.com to see the full faculty of gifted men and women whom God is raising up to lead and teach us. Girls 13 years and up are encouraged to attend.

Nancy Guthrie, a gifted teacher, writer, and conference speaker will serve as the conference teacher. Worship and music will be led by Kevin Twit of Indelible Grace and Laura Story. The preacher for this year's event will be Brian Habig, pastor of the Downtown Presbyterian Church in Greenville, South Carolina and a former Reformed University Minister.

Now is the time to rehearse the scope and surety of God's grace in our lives, to come together as this portion of His body to worship, learn, celebrate, anticipate, and focus on His eternal grace to and in us.