

MEN'S PRAYER
EVERY SUNDAY MORNING
FROM
9:10 — 9:35 AM
IN THE CHURCH LIBRARY
COME AND PRAY—YOU'LL
BE BLESSED!

MEN'S BREAKFAST!

As iron sharpens iron, so one man
sharpens another.

Proverbs 27:17

SATURDAY! SEPTEMBER
26TH

FROM

8:00 — 9:30 AM

BRING A FRIEND. EAT. TALK. FLEX.
BE BUILT UP IN YOUR FAITH.

This year our lessons will be from the
book of Galatians

Christ Presbyterian Church

P. O. Box 716

Sweetwater, TN 37874



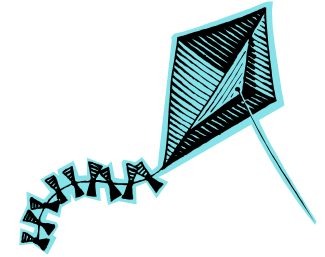
The Kite

by

John Newton

(Author of Amazing Grace)

My waking dreams are best conceal'd;
Much folly, little good they yield.
But now and then I gain, when sleeping,
A friendly hint, that's worth the keeping;
Lately I dream'd of one who cried, "Beware of self,
beware of pride; When you are prone to build a
Babel, Recall to mind this little fable."



Once on a time a paper kite, Was mounted to a
wondrous height / Where, giddy with its elevation /
It thus expressed self-admiration: "See how yon
crowds of gazing people / Admire my flight above
the steeple; How they would wonder if they knew /
All that a kite like me can do?"
"Were I but free, I'd take a flight / And pierce the
clouds beyond their sight. But, ah! Like a poor
pris'ner bound / my string confines me near the
ground / I'd brave the eagle's tow'ring wing /
Might I but fly without a string." It tugged and pulled,
while thus it spoke, to break the string; at last it broke.

(Continued on page 3)

Budget Report

General Fund—Thru August 31, 2009

Income	\$ 76,550.00
Needed	\$ 79,670.77
Difference	\$ 3,120.00 — deficit

Faith Promise—YTD Thru August 31, 2009

Faith Promise Income	\$ 9,465.01
Needed	\$ 11,540.31
Difference	\$ 2,075.30 — deficit
Our total annual commitment to missionaries:	\$ 17,146.00
Faith Promise checking account balance:	\$ 11,337.28

If you tithe because it pays, it won't pay.

*R. G. LeTourneau
Christian Philanthropist*



Prayer Concerns

Shut Ins & Their Caregivers: Quincy Jones; Emmett & Dorothy Skaggs; Ruth Williams; Hugh McCampbell's mother, Lucy; Nancy Barton's husband, Tom; Marty McCampbell's dad, Clyde Stuntz; Betty Lou Turpin's mother, Leon Holder; Bobbie Nicholson's mother, Leila Horton; & Wes' mother, Nancy Alford.

Health Concerns: Bill Stemen, Jewell & Suzy Wicker; Griff Harsh who is having back pain; Nancy Kennedy; Reba & John Wolfe; & Kathleen Schultz.

Pray for our country, our leaders, and the unemployed.

Nursery

6-Davis
13-Chastain
20-Maxie
27-Snyder



Anniversaries

20-Griff & Craig Harsh
28-Rob & Charlene Nelson



Birthdays

7-Jerry Rogers
8-Hannah Shinn
13-Gibson Alford
26-Peggy Burgess
28-Tom Barton
29-Nelma Williams



The Kite" (continued from page 1)

Depriv'd at once of all its stay, In vain it tried to soar
away / Unable its own weight to bear, it fluttered
downward through the air; Unable its own course
to guide / The winds soon plunged it in the tide.
Ah! Foolish kite; thou hadst no wing; How couldst
thou fly without a string?

My heart replied, "Oh Lord, I see / how much this
kite resembles me!"

Forgetful that by Thee I stand / Impatient of Thy
ruling hand; How oft I've wished to break the lines /
Thy wisdom for my lot assigns?

How oft indulged a vain desire / For something more
or something higher.

And but for grace or love divine,
A fall thus dreadful had been mine.

Wednesday PM Fellowship Host

2— Harsh & Schultz

16 — Maxie

30 — Houser

9 —Vander Griend

23 — Volunteer Needed

